

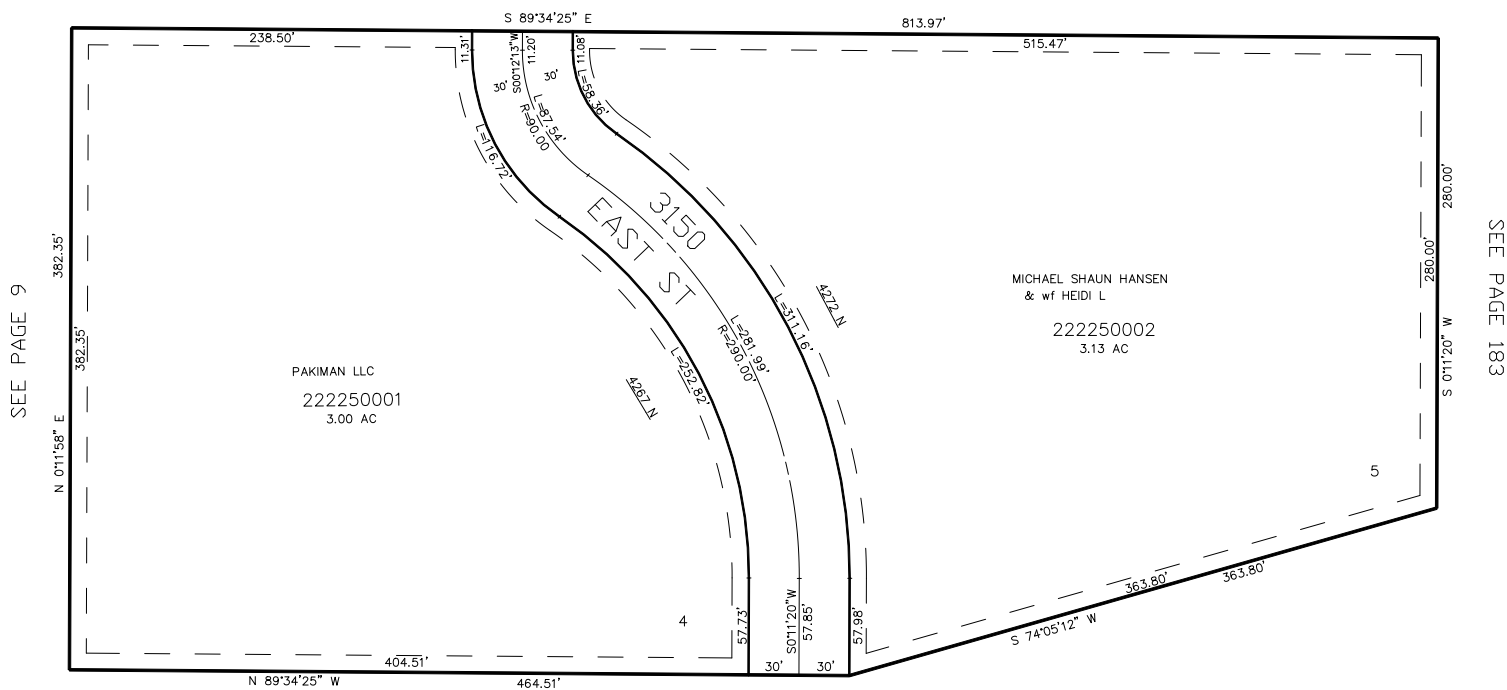
PART OF THE N.W.1/4, OF SECTION 20, T.7N., R.1E., S.L.B. & M.  
WARD ACRES SUBDIVISION PHASE 2

TAXING UNIT: 36

IN WEBER COUNTY

SCALE 1" = 60'

SEE PAGE 146



SEE PAGE 11

FOR COMPLETE ENG DATA SEE  
ORIGINAL DEDICATION PLAT IN  
BOOK 61, PAGE 9 OF RECORDS.

10' UTILITY & DRAINAGE EASEMENTS EACH  
SIDE OF PROPERTY LINES AS INDICATED  
BY DASHED LINES EXCEPT AS OTHERWISE  
SHOWN.